

# Amygdala Volumetric Change Following Psychotherapy for Posttraumatic Stress Disorder

Jonathan Laugharne, M.B.B.S., F.R.C.Psych., F.R.A.N.Z.C.P., Claire Kullack, B.Sc., Christopher W. Lee, Ph.D., Tracy McGuire, M.Sc., Simone Brockman, B.Sc. (Hons.), Peter D. Drummond, Ph.D., Sergio Starkstein, M.D., Ph.D.

The authors investigated the impact of eye movement desensitization and reprocessing (EMDR) and prolonged exposure (PE) on the volumes of the amygdala and hippocampus, structures known to be important in fear conditioning, in 20 patients with posttraumatic stress disorder (PTSD). Patients were randomly allocated to either EMDR or PE. Volumes were assessed before and after treatment via magnetic resonance imaging (MRI). Both groups showed significant improvements in PTSD symptoms. Left amygdala mean volume increased significantly following EMDR treatment only. No significant volumetric changes were found for the hippocampus.

*J Neuropsychiatry Clin Neurosci* 2016; 28:312–318; doi: 10.1176/appi.neuropsych.16010006

Posttraumatic stress disorder (PTSD) can occur following events considered to be traumatic. The disorder is characterized by re-experiencing symptoms relating to the trauma, mood changes, avoidance symptoms, and features of hyperarousal, which are persistent and cause significant reductions in functioning.<sup>1</sup> A number of studies have investigated structural brain changes in PTSD utilizing magnetic resonance imaging (MRI). Findings to date have included reduced bilateral hippocampal volume<sup>2–4</sup> and a decrease in the volume of the pregenual anterior cingulate and subcallosal cortices.<sup>5</sup> MRI studies have produced mixed results in regard to amygdala volume. A study of cancer patients with subthreshold PTSD characterized by recurrent intrusive memories<sup>6</sup> found smaller amygdalae, particularly on the left side, by comparison with a control group. Karl et al.,<sup>7</sup> in a meta-analysis of 11 relevant studies published up to 2006, concluded that PTSD patients had smaller left amygdalae than controls. Woon and Hedges<sup>8</sup> conducted a meta-analysis of nine studies, excluding pediatric data, and found no difference in amygdala volume compared with controls for adults with PTSD. In studies of veterans with PTSD, Kuo et al.<sup>9</sup> showed increased total amygdala volumes in their PTSD cohort by comparison with controls and a negative correlation between trauma history and amygdala volume. Morey et al.,<sup>10</sup> however, found decreased bilateral amygdalae in the PTSD group and no correlation with trauma load.

Eye movement desensitization and reprocessing (EMDR) and prolonged exposure (PE) are well-established first-line psychological treatments for PTSD.<sup>11–13</sup> However, key differences have been noted in the underlying processes.

Unlike PE, EMDR does not involve repeated detailed descriptions of the event, and the exposure is not of an extended duration.<sup>13</sup> It has been argued that EMDR does not work through the processes of extinction as does PE.<sup>14</sup> Indeed, processes that have been found crucial in PE and linked to extinction, such as having the client relive his or her trauma experiences,<sup>15</sup> have not been found relevant in a positive response to EMDR treatment.<sup>16</sup> Instead, the short exposures associated with EMDR treatment may mean that EMDR works through a reconsolidation process. Research has shown brief exposures are associated with reconsolidation, while prolonged exposures are associated with extinction.<sup>17</sup> Furthermore, reconsolidation and extinction are two opposing processes following memory retrieval, which have distinct biochemical signatures.<sup>17</sup> Finally, extinction appears to be mediated by the prefrontal cortex,<sup>18,19</sup> whereas reconsolidation of fear memories is thought to more directly involve the amygdala.<sup>20,21</sup>

There is some limited initial evidence that successful treatment of PTSD could produce measurable structural changes in brain regions associated with fear conditioning. Several studies have reported significantly larger hippocampal volumes following treatment of PTSD with medication<sup>22–24</sup> and psychotherapy.<sup>25</sup> Quidé et al.<sup>26</sup> conducted a systematic review aimed at comparing the effects of psychotherapy and pharmacotherapy on brain structure and function in anxiety disorders and major depressive disorder. The authors' principal conclusion was that psychotherapy tends to increase activity and recruitment of frontal areas (top-down effect), while pharmacotherapy decreases

overactivity of limbic structures (bottom-up effect). However, no distinction was made between different types of psychotherapy used, and there were very little data available relating to impact of treatment on amygdala volumes. In a separate study, Levy-Gigi et al.<sup>4</sup> found no change in amygdalae volume following a short course of trauma-focused cognitive-behavioral therapy (CBT). However, this study did not include any PE in the CBT treatment. In regard to neurobiological changes following treatment with EMDR, there are no published data regarding amygdala volume. One small, uncontrolled study found significant increase in hippocampal volumes after 12 EMDR sessions but did not report on the amygdala.<sup>27</sup>

The aim of our study was to examine structural changes in both the amygdala and hippocampus before and after treatment with either EMDR or PE. We chose EMDR and PE as they have been associated with large treatment effect sizes in PTSD.<sup>11</sup> We chose to examine the hippocampus given the existing evidence that it is reduced in volume in PTSD and may increase following effective treatment, and we chose the amygdala given the evidence for its strong role in fear conditioning and increased activation in PTSD.<sup>28</sup> We expected to find significant changes in amygdala and hippocampal volume following treatment.

## METHODS

### Participants

Twenty patients were recruited from consecutive referrals to the Posttraumatic Stress Clinic at the Alma St. Psychiatric Unit, Fremantle Hospital, and the Psychology Clinic at Murdoch University. Approval for the study was obtained from the South Metropolitan Hospitals Ethics Committee and the Murdoch University Ethics Committee. The inclusion criteria were that participants be between 18 and 65 years old, meet Clinician Administered PTSD Scale (CAPS)<sup>29</sup> criteria for PTSD, and be willing to engage in psychological treatment and neuroimaging. Patients included in the study were not to have initiated any new prescription medication within the previous month. Patients with current drug or alcohol dependence, diabetes, past history of psychotic illness, neurological disorders, evidence of a diagnosable cluster B personality disorder scored via the Structured Clinical Interview for DSM-IV Personality Disorders (SCID II),<sup>30</sup> and a score greater than 30 on the Dissociative Experiences Scale (DES)<sup>31</sup> were excluded.

Forty-eight patients were screened for participation, and 20 patients were recruited into the study. Patients were excluded from the study due to failure to meet PTSD diagnostic criteria (N=5), inability to complete baseline brain scans (N=4), evidence of significant dissociative symptoms (N=3), evidence of cluster B personality disorder or previous brain injury (N=6), declining to participate after assessment (N=5), and other reasons (N=5). Demographic information for the 20 participants is summarized in Table 1. Briefly, the sample consisted of 14 (70%) females and six (30%) males,

and the mean age was 40.1 ( $\pm 9.9$ ) years. Within the PE group, four participants were taking no psychotropic medication, six were taking an antidepressant, and one was prescribed a benzodiazepine. In the EMDR group, three participants were taking no psychotropic, six were prescribed antidepressants, and three were prescribed an antipsychotic agent (for treatment of PTSD symptoms). Participants were randomly allocated to either EMDR or PE using a computer-generated random number sequence that was set to allocate 10 patients to each condition without restrictions. Each participant was allocated to treatment after all baseline data were collected by the third author, who had no contact with the participants nor any indication of their baseline scores. All 20 patients completed the study protocol.

### Measures

Clinical assessment included the following instruments: CAPS, SCID II, and DES. The CAPS was the primary measure of clinical symptom change and was administered at baseline and posttreatment by a rater who was blind to the treatments received and imaging results. The CAPS had excellent internal consistency in this sample, with coefficients between  $\alpha=0.90$  and  $\alpha=0.97$ . The SCID II and DES were administered at baseline only, as their purpose in this study was to identify exclusion criteria (see above).

### Clinical Intervention

Participants in both EMDR and PE therapy received twice-weekly therapy sessions for 12 sessions from a mental health clinician trained and experienced in the therapy. Both therapies were carried out according to standard, internationally accepted protocols. PE was structured in accordance with the Prolonged Exposure Therapy for PTSD: Emotional Processing of Traumatic Experiences-Therapist Guide,<sup>32</sup> whereas EMDR was based on the Eye Movement Desensitization and Reprocessing: Basic Principles, Protocols, and Procedures.<sup>33</sup> Each of the two therapists involved in the study attended training in both therapies, and each therapist provided treatment to half the patients in the EMDR group and half the patients in the PE group. The PE training was accredited by the Australian Centre for Posttraumatic Mental Health and the EMDR training by EMDR International Association Australia. Supervision was provided for both treatments, and fidelity ratings were completed by an independent senior therapist utilizing video recordings of sessions to ensure the therapy met these standards.

### MRI

All subjects underwent MRI imaging using a standard multimodal protocol on two occasions: pretreatment and after 12 sessions of treatment. The mean delay from completion of treatment to the second MRI was 23 days (26 days for the PE group and 19 days for the EMDR group). All scans were carried out in a standard fashion on a Siemens Vision 1.5T scanner at Fremantle Hospital, and the data were stored electronically. The following sequences were obtained: three-dimensional T1-weighted (three-dimensional-MPRAGE:

**TABLE 1. Demographic and Clinical Characteristics of Participants**

Characteristic	Eye Movement Desensitization Reprocessing (N=10)	Prolonged Exposure (N=10)
Number of males	2	4
Number of females	8	6
Mean age of participant (SD; years)	40.1 (9.97)	45.5 (12.03)
Acute PTSD (<3 months)	0	2
Chronic PTSD (≥3 months)	10	8
Delayed-onset PTSD (≥6 months)	6	4
Number of participants with childhood trauma	7	6
Number of participants with adult trauma	7	5
Number of participants with childhood and adult trauma	6	5
Primary trauma		
Sudden death of a loved one	1	1
Adult sexual assault	4	0
Child sexual assault	1	0
Physical assault	0	1
Serious injury to self	0	2
Motor vehicle accident	1	1
Witnessing death or injury	2	3
Threat to physical safety	0	2
Natural disaster	1	0

echo-time [TE]=3.34 ms; repetition time [TR]=2,530 ms, inversion time [TI]=1,100 ms, flip angle=10°, field of view [FOV]=26.0, matrix=256×256×192 mm, no gap [slice thickness 1 mm]; a T2-weighted sequence (TE=75 ms, TR=7,800 ms, FOV=26.0, matrix=256×256, no gap [slice thickness=1 mm], turbo factor=9).

Imaging data were analyzed at the Neuroimaging Laboratory at Fremantle Hospital using BRAINS-2 software. Image analysis was carried out by S.S. and S.B., blind to both treatment condition and clinical findings. All scans were processed through an automated method reoriented by step-wise coregistration to a set of template images, centered on the anterior commissure, and resampled to 1-mm resolution. All images were intensity normalized and inhomogeneities were corrected. A discriminant tissue classification was performed and a brain mask created using an artificial neural network (ANN).<sup>34</sup> Measures of gray matter, white matter, and CSF volume were compared using the standard Talairach method. ANNs were applied to each scan to measure cortical and subcortical structures, including the amygdalae. Results of this procedure were visually inspected by a neuropsychiatrist with experience in using BRAINS-2 (S.S.), and all scans passed all control stages successfully. Volumes are reported in cubic millimeters. To control for differences in overall head size, all measures were analyzed as a proportion of intracranial volume (ICV).

The methodology, validity, and reproducibility of morphometric analysis have been reported by our group (RP4, SS25).<sup>35</sup>

### Data Analysis

Data were analyzed using the SPSS Statistics 22 software. There were no missing data. Normalized amygdala and hippocampal volumes pre- and posttreatment were analyzed

by time (before and after treatment), side (left and right), and treatment group (EMDR, PE) using multivariate repeated-measures analysis of variance. A significant interaction was explored further with planned contrasts (paired t tests) within each group of left versus right amygdala and hippocampal volume at pretreatment and posttreatment. Clinical change via CAPS was assessed in similar analyses, with contrasts between the baseline assessment (6 weeks before treatment) and the pretreatment assessment and between pre- and posttreatment assessments.

## RESULTS

### Treatment Effects on PTSD Symptoms

PTSD symptoms, as measured via the CAPS scores, decreased significantly over the course of treatment in both treatment groups (Figure 1). A significant main effect for time was found for the CAPS overall score,  $F(1,18)=120.63$ ,  $p<0.01$ ,  $\eta_p^2=0.87$ . These improvements were similar in both groups. The mean ( $\pm$ SD) CAPS score at PE pretreatment was 80.70 ( $\pm$ 18.50), and the mean score at posttreatment was 22.30 ( $\pm$ 19.17), whereas for the EMDR group, the pretreatment mean was 87.60 ( $\pm$ 20.92), and the posttreatment mean was 28.40 ( $\pm$ 27.85). There was no significant interaction between time and treatment condition,  $F(1,18)=0.01$ ,  $p=0.94$ ,  $\eta_p^2=0.00$ .

### Imaging Findings

There was a significant time-by-side-by-treatment interaction: Pillai's trace=0.32, multivariate  $F(1,18)=4.07$ ,  $p<0.04$ ,  $\eta_p^2=0.32$ . The left amygdala volume was significantly greater posttherapy than pretherapy for those patients receiving EMDR treatment (Table 2, Figure 2). There was no significant change in hippocampal volume or in right amygdala or total amygdala volume in either treatment group.

## DISCUSSION

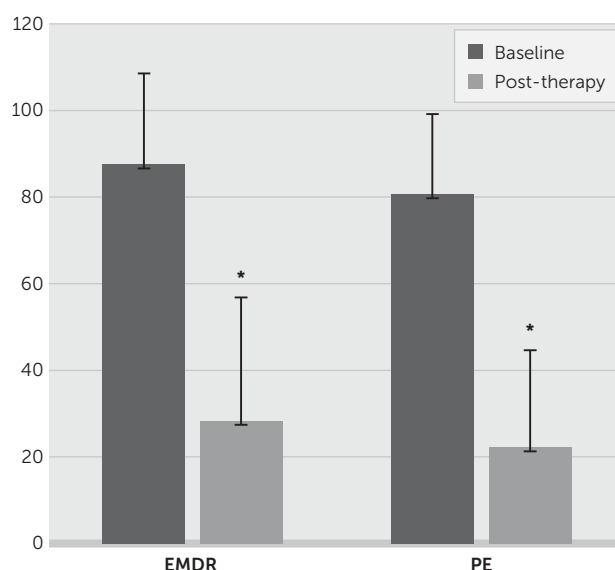
We investigated the hypothesis that structural change may occur within the hippocampus and amygdala following two accepted psychotherapeutic interventions. Significant treatment effects were demonstrated for each of the interventions, which is consistent with existing evidence. We found evidence for volumetric increase for the left amygdala only after 12 EMDR sessions but no similar increase following 12 sessions of PE. No significant change in hippocampal volume was found following 12 sessions of EMDR or PE. We did not, therefore, replicate the finding of increased hippocampal volume following EMDR reported by Bossini et al.<sup>27</sup> These findings are intriguing in a number of ways and may indicate a difference in the underlying biological

mechanisms for these two therapies. These data raise the possibility that PE operates by modulating regions other than the amygdala implicated within the fear conditioning network. The literature suggesting different underlying processes for the efficacy of EMDR and PE has been summarized in the introduction,<sup>13–17</sup> and there is some evidence for possible differences in key brain regions implicated in these processes.<sup>18–21</sup>

There is good evidence for increased activation of the amygdala in PTSD when the traumatic memory is reactivated. Successful treatment of PTSD would therefore be expected to produce a decrease in activation of the amygdala from a functional perspective. The questions therefore arise as to why symptomatic improvement should lead to an increase in amygdala volume, and why in the left amygdala rather than the right? We cannot answer these questions with any certainty from the current data, but the existing literature may indicate some possible mechanisms. Previous MRI studies have indicated that total amygdala volumes in patients with PTSD can be increased<sup>7</sup> or decreased<sup>8</sup> by comparison with controls. In a review of the relevant literature, including both human and animal studies, Tottenham and Sheridan<sup>36</sup> suggested that timing of trauma in relation to developmental stages may be important in understanding some of the apparent inconsistencies. These authors suggest that amygdala volume increases secondary to early-life traumas but may atrophy while remaining overactive later in adult life. Our findings suggest a possible reversal of this atrophy following EMDR, but no clear mechanism for this can be shown from the data.

The question of laterality is also intriguing. In a meta-analysis of 82 studies, Pedraza et al.<sup>37</sup> found that the amygdala is reliably asymmetrical in the normal adult population, with the left amygdala significantly smaller in volume than the right amygdala ( $p < 0.001$ ). In regard to clinical populations, a Japanese study of 76 cancer survivors compared those who experienced cancer-related intrusive

**FIGURE 1. Clinician-Administered Posttraumatic Stress Scale (CAPS) Baseline and Posttherapy Mean Scores<sup>a</sup>**



<sup>a</sup> EMDR, eye movement desensitization and reprocessing; PE, prolonged exposure.

\* $p < 0.01$ .

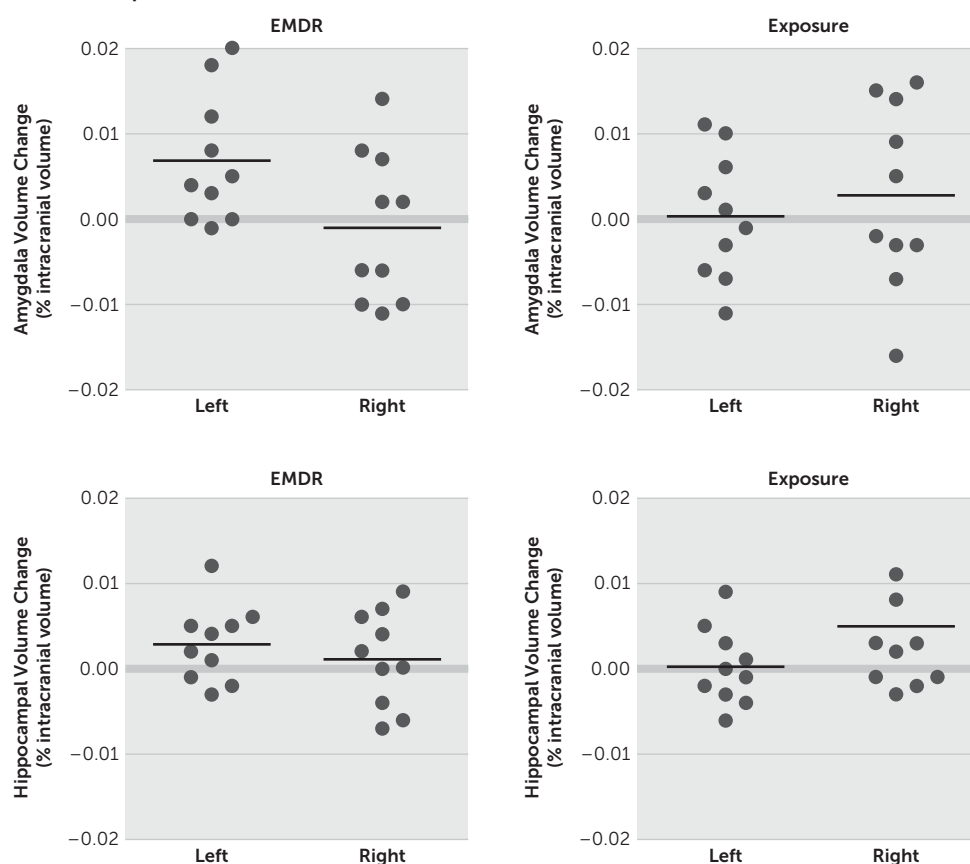
recollections with those who did not.<sup>6</sup> The authors noted that although the patients were not diagnosable with full PTSD, the presence in such patients of clinically significant intrusions can be considered characteristic of sub-threshold PTSD. Furthermore, total amygdala volume was smaller in patients with intrusive recollections compared with the control group, and the volume reduction for the left amygdala was twice that for the right amygdala.<sup>6</sup> In their meta-analysis of amygdala volume in adult PTSD patients, Woon and Hedges<sup>8</sup> found significantly reduced left amygdala volumes, as compared with the right, in both the patient group and the controls (subjects unexposed to trauma and those exposed to trauma but without PTSD). These findings

**TABLE 2. Mean Amygdala Volume and Hippocampal Volume ( $\text{mm}^3$ ) Ratios (%) Before and After Eye Movement Desensitization Reprocessing (EMDR) and Prolonged Exposure (PE)<sup>a</sup>**

Variable	Pre EMDR		Post EMDR		Pre PE		Post PE	
	Mean	SD	Mean	SD	Mean	SD	Mean	SD
Left amygdala volume	906	122	1,005*	99	924	100	926	77
Right amygdala volume	883	128	868	115	870	147	907	140
Total amygdala volume	1,790	211	1,874	172	1,793	225	1,832	159
Left hippocampal volume	2,084	189	2,130	198	1,993	192	1,995	238
Right hippocampal volume	2,123	204	2,139	197	2,004	157	2,036	184
Total hippocampal volume	4,207	355	4,268	378	3,997	336	4,031	402
ICV	1,390,345	120,827	1,390,334	120,273	1,372,629	91,739	1,371,921	92,128
Left amygdala volume/ICV ratio	0.065	0.008	0.072*	0.005	0.068	0.009	0.068	0.008
Right amygdala volume/ICV ratio	0.064	0.009	0.066	0.010	0.064	0.011	0.067	0.013
Total amygdala volume/ICV ratio	0.129	0.013	0.135	0.017	0.131	0.013	0.135	0.018
Left hippocampal volume/ICV ratio	0.151	0.016	0.154	0.014	0.146	0.015	0.146	0.018
Right hippocampal volume/ICV ratio	0.153	0.009	0.154	0.010	0.146	0.012	0.149	0.012
Total hippocampal volume/ICV ratio	0.303	0.024	0.308	0.023	0.292	0.026	0.294	0.028

<sup>a</sup> ICV, intracranial volume.

\* $p < 0.05$ .

**FIGURE 2. Change in Left and Right Amygdala and Hippocampal/Intracranial Volume Ratio Volume in Each Group After Treatment<sup>a</sup>**

<sup>a</sup> The left amygdala volume increased significantly after treatment in the eye movement desensitization and reprocessing (EMDR) group ( $p < 0.05$ ).

suggest that asymmetric lateralization of amygdala volume in normal unexposed subjects is preserved in trauma exposure and in PTSD. There is, then, support within the existing literature for amygdala volumetric lateralization in the non-traumatized, the traumatized without PTSD, and the PTSD population with smaller left-sided amygdalae, which may be further reduced in volume in PTSD patients.

The main limitation of this current study is the relatively small number of participants in each treatment group, and this invites caution in interpreting the findings. Thus, the lack of volumetric change in the PE group may have been related to limited study power rather than absence of treatment effect. However, there is very little previous evidence regarding the impact of effective psychotherapy for PTSD on the amygdala and hippocampus, and no previous study has compared EMDR and PE in this regard. Another possible limitation is that the study excluded participants with severe dissociative symptoms and cluster B personality disorder. While this helps to assess the effects of treatment in a more pure PTSD sample, the findings may not generalize to PTSD samples that include these diagnostic features. This could be tested in future research.

A possible limitation which may be relevant is that patients in the study were not randomized for trauma type. Of

particular note is that five patients in the EMDR group had primary sexual traumas, compared with none in the PE group (Table 1), and this may be an important confounding factor, which future studies should address. However, the literature does not support that type or severity of trauma makes any difference to treatment outcome. For example, in one of the first studies to examine this issue, no difference in treatment outcome was found for participants whose trauma consisted of childhood sexual abuse, adult sexual assault, or adult nonsexual assault.<sup>38</sup> In a later meta-analysis involving 13 studies and 675 participants, it was found that trauma history, including type of trauma and whether or not there was repeated traumatization, did not have any significant effect on the outcome of treatment.<sup>39</sup> Since the meta-analysis, a large study of 110 female PTSD participants also found that

prior trauma severity did not impact on treatment. For example, a history of childhood sexual abuse in addition to trauma was not associated with the severity of the initial PTSD symptoms, symptom reduction during the treatment study, the rate of change during treatment, or the number of sessions needed.<sup>40</sup> However, just because type of trauma does not affect treatment outcome does not rule out that it could differentially affect brain functioning. This is an empirical question that is yet to be tested, to our knowledge, and further research could investigate whether this is possibly the case.

The relative strengths and weaknesses of an automated image analysis approach versus a manualized approach may be debated. A semiautomated system, such as BRAINS II, avoids the confounding factors inherent in manualized tracing. Furthermore, there is evidence from a study measuring hippocampal volume in PTSD patients that BRAINS II findings are consistent with an alternate method using voxel-based morphometry.<sup>41</sup>

Our results, while preliminary, add to the existing literature in suggesting a possible difference between these two established PTSD treatments at a biological level. These findings indicate the value of further studies with larger subject numbers. Such studies with a larger sample size



could also investigate clinical severity and dissociation scores at baseline as predictors of amygdala volume outcomes post-treatment and the differential effects of trauma types on amygdala volume.

## AUTHOR AND ARTICLE INFORMATION

From the Community, Culture and Mental Health Unit School of Psychiatry and Clinical Neurosciences, University of Western Australia, Perth, Western Australia (JL, CK); the Neuropsychiatry Unit, School of Psychiatry and Clinical Neurosciences, University of Western Australia, Perth, Western Australia (SB, SS); School of Psychology and Exercise Science, Murdoch University, Perth, Western Australia (CL, TM, PD).

Send correspondence to Dr. Laugharne; e-mail: jonathan.laugharne@uwa.edu.au

The authors report no financial relationships with commercial interests.

Received January 12, 2016; revision received March 31, 2016; accepted April 5, 2016; published online June 3, 2016.

## REFERENCES

- Yehuda R: Post-traumatic stress disorder. *N Engl J Med* 2002; 346: 108–114
- Bonne O, Vythilingam M, Inagaki M, et al: Reduced posterior hippocampal volume in posttraumatic stress disorder. *J Clin Psychiatry* 2008; 69:1087–1091
- Shin LM, Shin PS, Heckers S, et al: Hippocampal function in posttraumatic stress disorder. *Hippocampus* 2004; 14:292–300
- Levy-Gigi E, Szabó C, Kelemen O, et al: Association among clinical response, hippocampal volume, and FKBP5 gene expression in individuals with posttraumatic stress disorder receiving cognitive behavioral therapy. *Biol Psychiatry* 2013; 74: 793–800
- Rauch SL, Shin LM, Segal E, et al: Selectively reduced regional cortical volumes in post-traumatic stress disorder. *Neuroreport* 2003; 14:913–916
- Matsuoka Y, Yamawaki S, Inagaki M, et al: A volumetric study of amygdala in cancer survivors with intrusive recollections. *Biol Psychiatry* 2003; 54:736–743
- Karl A, Schaefer M, Malta LS, et al: A meta-analysis of structural brain abnormalities in PTSD. *Neurosci Biobehav Rev* 2006; 30: 1004–1031
- Woon FL, Hedges DW: Amygdala volume in adults with post-traumatic stress disorder: a meta-analysis. *J Neuropsychiatry Clin Neurosci* 2009; 21:5–12
- Kuo JR, Kaloupek DG, Woodward SH: Amygdala volume in combat-exposed veterans with and without posttraumatic stress disorder: a cross-sectional study. *Arch Gen Psychiatry* 2012; 69: 1080–1086
- Morey RA, Gold AL, LaBar KS, et al: Amygdala volume changes in posttraumatic stress disorder in a large case-controlled veterans group. *Arch Gen Psychiatry* 2012; 69:1169–1178
- Bisson JI, Ehlers A, Matthews R, et al: Psychological treatments for chronic post-traumatic stress disorder. Systematic review and meta-analysis. *Br J Psychiatry* 2007; 190:97–104
- Chen YR, Hung KW, Tsai JC, et al: Efficacy of eye-movement desensitization and reprocessing for patients with posttraumatic-stress disorder: a meta-analysis of randomized controlled trials. *PLoS One* 2014; 9:e103676
- World Health Organization: Guidelines for the Management of Conditions Specifically Related to Stress. Geneva, WHO, 2013
- Solomon RM, Shapiro F: EMDR and the adaptive information processing model: Potential mechanisms of change. *J EMDR Pract Res* 2008; 2:315–325
- Jaycox LH, Foa EB, Morral AR: Influence of emotional engagement and habituation on exposure therapy for PTSD. *J Consult Clin Psychol* 1998; 66:185–192
- Lee CW, Taylor G, Drummond PD: The active ingredient in EMDR: Is it traditional exposure or dual focus of attention? *Clin Psychol Psychother* 2006; 13:97–107
- Suzuki A, Josselyn SA, Frankland PW, et al: Memory reconsolidation and extinction have distinct temporal and biochemical signatures. *J Neurosci* 2004; 24:4787–4795
- Morgan MA, LeDoux JE: Contribution of ventrolateral prefrontal cortex to the acquisition and extinction of conditioned fear in rats. *Neurobiol Learn Mem* 1999; 72:244–251
- Schiller D, Kanen JW, LeDoux JE, et al: Extinction during reconsolidation of threat memory diminishes prefrontal cortex involvement. *Proc Natl Acad Sci USA* 2013; 110:20040–20045
- Díaz-Mataix L, Ruiz Martínez RC, Schafe GE, et al: Detection of a temporal error triggers reconsolidation of amygdala-dependent memories. *Curr Biol* 2013; 23:467–472
- Nader K, Schafe GE, LeDoux JE: Fear memories require protein synthesis in the amygdala for reconsolidation after retrieval. *Nature* 2000; 406:722–726
- Bossini L, Tavanti M, Lombardelli A, et al: Changes in hippocampal volume in patients with post-traumatic stress disorder after sertraline treatment. *J Clin Psychopharmacol* 2007; 27:233–235
- Bremner JD, Mletzko T, Welter S, et al: Effects of phenytoin on memory, cognition and brain structure in post-traumatic stress disorder: a pilot study. *J Psychopharmacol* 2005; 19:159–165
- Vermetten E, Vythilingam M, Southwick SM, et al: Long-term treatment with paroxetine increases verbal declarative memory and hippocampal volume in posttraumatic stress disorder. *Biol Psychiatry* 2003; 54:693–702
- Lindauer RJL, Vlieger EJ, Jalink M, et al: Effects of psychotherapy on hippocampal volume in out-patients with post-traumatic stress disorder: a MRI investigation. *Psychol Med* 2005; 35:1421–1431
- Quidé Y, Witteveen AB, El-Hage W, et al: Differences between effects of psychological versus pharmacological treatments on functional and morphological brain alterations in anxiety disorders and major depressive disorder: a systematic review. *Neurosci Biobehav Rev* 2012; 36:626–644
- Bossini L, Tavanti M, Calossi S, et al: EMDR treatment for posttraumatic stress disorder, with focus on hippocampal volumes: a pilot study. *J Neuropsychiatry Clin Neurosci* 2011; 23: E1–E2
- Shin LM, Rauch SL, Pitman RK: Amygdala, medial prefrontal cortex, and hippocampal function in PTSD. *Ann NY Acad Sci* 2006; 1071:67–79
- Weathers FW, Keane TM, Davidson JRT: Clinician-administered PTSD scale: a review of the first ten years of research. *Depress Anxiety* 2001; 13:132–156
- First MB, Gibbon M, Spitzer RL, et al: User's Guide for the Structured Clinical Interview for DSM IV Axis II Personality Disorders (SCID II). Washington, DC, American Psychiatric Publishing, 1997
- Bernstein EM, Putnam FW: Development, reliability, and validity of a dissociation scale. *J Nerv Ment Dis* 1986; 174:727–735
- Foa EB, Hembree EA, Rothbaum BO: Prolonged Exposure Therapy for PTSD: Emotional Processing of Traumatic Experiences—Therapist Guide. New York, Oxford University Press, 2007
- Shapiro F: Eye Movement Desensitization and Reprocessing: Basic Principles, Protocols, and Procedures, 2nd ed. New York, Guilford Press, 2001
- Pierson R, Johnson H, Harris G, et al: Fully automated analysis using BRAINS: AutoWorkup. *Neuroimage* 2011; 54:328–336
- Starkstein SE, Mizrahi R, Capizzano AA, et al: Neuroimaging correlates of apathy and depression in Alzheimer's disease. *J Neuropsychiatry Clin Neurosci* 2009; 21:259–265

36. Tottenham N, Sheridan MA: A review of adversity, the amygdala and the hippocampus: a consideration of developmental timing. *Front Hum Neurosci* 2009; 3:68
37. Pedraza O, Bowers D, Gilmore R: Asymmetry of the hippocampus and amygdala in MRI volumetric measurements of normal adults. *J Int Neuropsychol Soc* 2004; 10:664–678
38. Foa EB, Hembree EA, Cahill SP, et al: Randomized trial of prolonged exposure for posttraumatic stress disorder with and without cognitive restructuring: outcome at academic and community clinics. *J Consult Clin Psychol* 2005; 73:953–964
39. Powers MB, Halpern JM, Ferenschak MP, et al: A meta-analytic review of prolonged exposure for posttraumatic stress disorder. *Clin Psychol Rev* 2010; 30:635–641
40. Walter KH, Buckley A, Simpson JM, et al: Residential PTSD treatment for female veterans with military sexual trauma: does a history of childhood sexual abuse influence outcome? *J Interpers Violence* 2014; 29:971–986
41. Jatzko A, Rothenhöfer S, Schmitt A, et al: Hippocampal volume in chronic posttraumatic stress disorder (PTSD): MRI study using two different evaluation methods. *J Affect Disord* 2006; 94:121–126