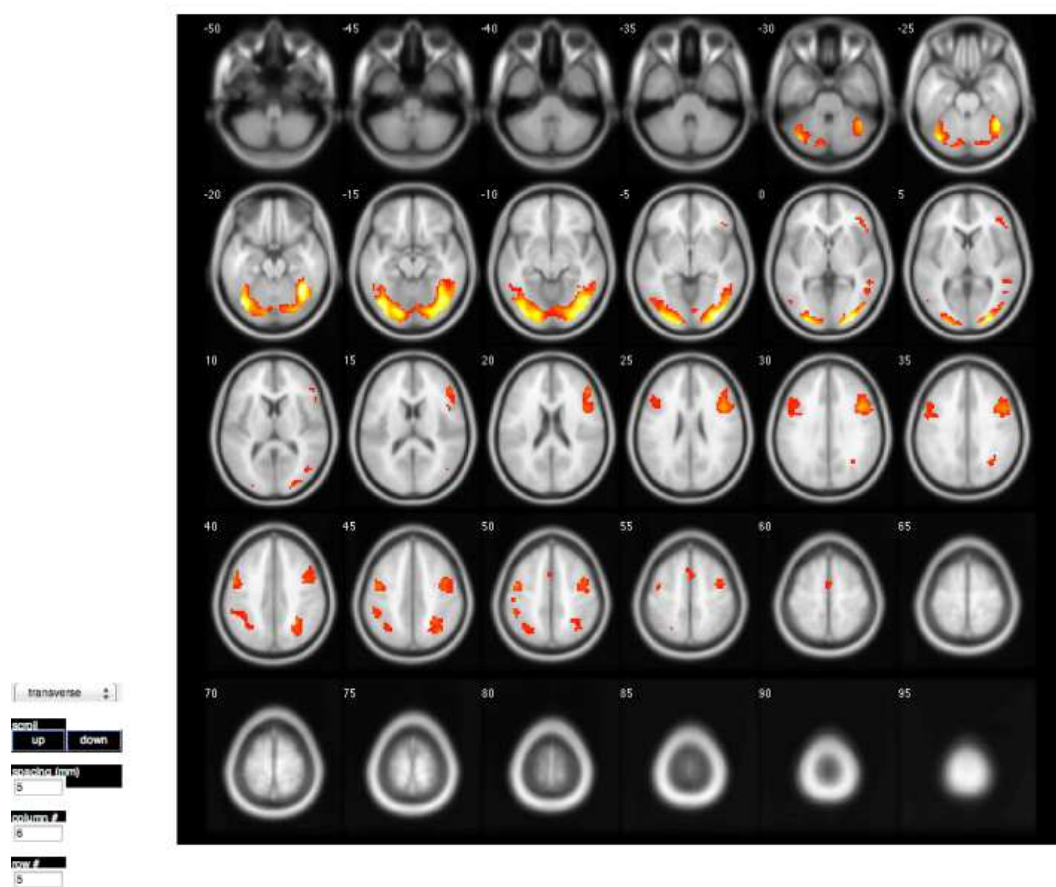


Imaging of apathy patients under neutral stimuli



Imaging of nonpathy patients under neutral stimuli

| z mm | Label | % Cluster | Nb Vx Cluster | % Label | Nb Vx Label | | | |
|----------------|-------|--------------------|---------------|---------------------|-------------|------|-------|------|
| -85 | -5 | <u>Fusiform_R</u> | 12.60 | 1921 | 32.44 | 2518 | | |
| | | <u>Fusiform_L</u> | 9.16 | 1921 | 25.71 | 2310 | | |
| | | Cerebellum_6_R | 9.01 | 1921 | 32.53 | 1795 | | |
| | | Cerebellum_Crus1_L | 7.39 | 1921 | 18.41 | 2603 | | |
| | | Occipital_Inf_L | 7.29 | 1921 | 50.21 | 941 | | |
| | | Temporal_Inf_R | 6.40 | 1921 | 11.67 | 3557 | | |
| | | Lingual_R | 6.35 | 1921 | 17.90 | 2380 | | |
| | | Cerebellum_6_L | 5.52 | 1921 | 21.12 | 1694 | | |
| | | Occipital_Inf_R | 5.52 | 1921 | 36.17 | 989 | | |
| | | Lingual_L | 5.15 | 1921 | 15.95 | 2095 | | |
| | | Occipital_Mid_L | 4.69 | 1921 | 9.29 | 1270 | | |
| | | Temporal_Mid_R | 4.63 | 1921 | 6.01 | 4409 | | |
| | | OUTSIDE | 3.64 | 1921 | 0.00 | 0 | | |
| | | Occipital_Mid_R | 2.86 | 1921 | 8.85 | 2098 | | |
| | | Cerebellum_Crus1_R | 2.60 | 1921 | 6.37 | 2648 | | |
| | | Temporal_Inf_L | 1.72 | 1921 | 3.40 | 1200 | | |
| | | Calcarius_L | 1.56 | 1921 | 4.48 | 2258 | | |
| | | Calcarius_R | 1.41 | 1921 | 4.90 | 1861 | | |
| | | Temporal_Mid_L | 0.57 | 1921 | 0.75 | 4942 | | |
| | | Wernis_S | 0.52 | 1921 | 9.10 | 371 | | |
| | | Cerebellum_Crus2_L | 0.47 | 1921 | 1.60 | 1894 | | |
| | | Occipital_Sup_L | 0.47 | 1921 | 2.22 | 1366 | | |
| | | Cuneus_R | 0.26 | 1921 | 1.19 | 1424 | | |
| | | Occipital_Sup_R | 0.16 | 1921 | 0.72 | 1413 | | |
| | | Temporal_Sup_R | 0.05 | 1921 | 0.11 | 3141 | | |
| | | 11 | 28 | <u>Precentral_R</u> | 27.53 | 563 | 15.47 | 3381 |
| | | | | Frontal_Inf_Oper_R | 25.58 | 563 | 34.74 | 1399 |
| | | | | Frontal_Inf_Tri_R | 24.16 | 563 | 21.34 | 2151 |
| | | | | Frontal_Mid_R | 18.12 | 563 | 6.74 | 5104 |
| | | | | OUTSIDE | 3.55 | 563 | 0.00 | 0 |
| | | | | Frontal_Inf_Opb_R | 0.71 | 563 | 0.79 | 1707 |
| | | | | Frontal_Sup_R | 0.36 | 563 | 0.17 | 4056 |
| Angular_R | 35.71 | | | 168 | 11.56 | 1752 | | |
| OUTSIDE | 29.17 | | | 168 | 0.00 | 0 | | |
| Parietal_Inf_R | 17.86 | | | 168 | 7.53 | 1345 | | |
| -52 | 43 | Occipital_Sup_R | 13.10 | 168 | 5.25 | 1413 | | |
| | | Occipital_Mid_R | 2.38 | 168 | 0.64 | 2098 | | |
| | | Parietal_Sup_R | 1.79 | 168 | 0.46 | 2222 | | |
| | | Precentral_L | 56.65 | 203 | 11.01 | 3526 | | |
| -1 | 40 | Frontal_Inf_Tri_L | 28.60 | 203 | 5.60 | 2428 | | |
| | | Frontal_Inf_Oper_L | 11.82 | 203 | 7.80 | 1038 | | |
| | | Postcentral_L | 7.88 | 203 | 1.39 | 3892 | | |
| | | Frontal_Mid_L | 2.96 | 203 | 0.42 | 4863 | | |
| -48 | 49 | Parietal_Inf_L | 88.49 | 123 | 13.65 | 2447 | | |
| | | Parietal_Sup_L | 17.89 | 123 | 3.60 | 2065 | | |
| | | Angular_L | 1.63 | 123 | 0.58 | 1173 | | |
| | | Supp_Motor_Area_L | 64.86 | 37 | 3.77 | 2147 | | |
| -1 | 61 | Supp_Motor_Area_R | 32.43 | 37 | 1.71 | 2371 | | |
| | | OUTSIDE | 2.70 | 37 | 0.00 | 0 | | |

Data of nonapathy patients under neutral stimuli

| z mm | Label | % Cluster | Nb Vx Cluster | % Label | Nb Vx Label | | | |
|--------------------|-------|--------------------|---------------|--------------------|-------------|------|-------|------|
| -97 | -2 | Occipital_Mid_L | 28.64 | 220 | 6.50 | 3270 | | |
| | | Occipital_Inf_L | 27.27 | 220 | 21.52 | 941 | | |
| | | Lingual_L | 20.00 | 220 | 7.09 | 2095 | | |
| | | <u>Fusiform_L</u> | 10.00 | 220 | 3.21 | 2310 | | |
| | | Cerebellum_Crus1_L | 4.00 | 220 | 1.17 | 2603 | | |
| | | Calcarius_L | 4.09 | 220 | 1.35 | 2258 | | |
| | | OUTSIDE | 3.64 | 220 | 0.00 | 0 | | |
| | | Occipital_Sup_L | 2.27 | 220 | 1.24 | 1366 | | |
| | | -88 | 1 | <u>Fusiform_R</u> | 22.65 | 574 | 17.42 | 2518 |
| | | | | Occipital_Inf_R | 14.29 | 574 | 27.98 | 989 |
| | | | | Cerebellum_6_R | 13.94 | 574 | 15.04 | 1795 |
| | | | | Cerebellum_Crus1_R | 13.24 | 574 | 9.69 | 2648 |
| Lingual_R | 9.41 | | | 574 | 7.92 | 2308 | | |
| Occipital_Mid_R | 6.79 | | | 574 | 6.27 | 2098 | | |
| OUTSIDE | 4.53 | | | 574 | 0.00 | 0 | | |
| Cerebellum_Crus2_R | 4.36 | | | 574 | 3.99 | 2117 | | |
| Temporal_Inf_R | 4.36 | | | 574 | 2.37 | 3557 | | |
| Calcarius_R | 3.66 | | | 574 | 3.81 | 1861 | | |
| Cerebellum_8_R | 1.57 | | | 574 | 1.32 | 2308 | | |
| Temporal_Mid_R | 0.87 | | | 574 | 0.38 | 4409 | | |
| -78 | -47 | Occipital_Sup_R | 0.17 | 574 | 0.24 | 1413 | | |
| | | Cuneus_R | 0.17 | 574 | 0.24 | 1424 | | |
| | | Cerebellum_8_L | 38.30 | 94 | 6.44 | 1887 | | |
| | | Cerebellum_8b_L | 31.91 | 94 | 17.31 | 585 | | |
| | | Cerebellum_Crus2_L | 28.72 | 94 | 4.81 | 1894 | | |
| | | Cerebellum_Crus1_L | 1.06 | 94 | 0.13 | 2603 | | |
| | | OUTSIDE | 37.50 | 24 | 0.00 | 0 | | |
| | | Parietal_Inf_R | 33.33 | 24 | 2.01 | 1345 | | |
| | | Angular_R | 29.17 | 24 | 1.35 | 1752 | | |
| | | 8 | 28 | Frontal_Inf_Oper_R | 45.15 | 26 | 2.89 | 1399 |
| | | | | Precentral_R | 38.46 | 26 | 1.00 | 3381 |
| | | | | Frontal_Mid_R | 15.38 | 26 | 0.26 | 5104 |

Data of apathy patients under neutral stimuli